

RESILIENCY SERVICES FOR IBM i – HA, DR & ARCHIVE AS A SERVICE

RESILIENCE FOR THE DIGITAL ECONOMY

The complexity of the digital economy demands a higher degree of business continuity and resilience than ever before.

The number of options for computing and storage as well as the sheer volume of cyber threats can overwhelm IT organisations when ensuring availability. Key challenges stretch from justifying an initial outlay for technology, effective deployment to maintaining operational readiness and regular testing.

Every business needs to ensure maximum availability of critical data and applications in the face of any risk – whether physical catastrophe, equipment failure, human error or cyber threat.

CSI's portfolio of resilience services for IBM i range from the most robust High Availability solutions to disaster recovery as well as an Archive as a Service offering to help organisations remain compliant with the most stringent regulations.

High Availability DRaaS

For very fast recovery, CSI's High Availability Disaster Recovery as a Service delivers:

- a secondary IBM i system in the CSI PowerCloud connected to the user organisation's primary system
- data replicated between primary and secondary systems in real-time

- by default an RPO of 15 minutes and RTO <4 hours
- High availability design workshops confirm the parameters to meet user requirements

Warm Start DRaaS

For situations that don't demand very fast recovery, CSI's 'warm start' Disaster Recovery as a Service delivers:

- a secondary IBM i system in the CSI PowerCloud connected to the user organisation's primary system
- the secondary system restored from backup (no real-time data replication)
- since recovery is via backup, the RPO and RTO goals are dependent on the backup technology and
- backup schedule - as well as the availability of a recent backup at the DR site when required

By default, the user organisation is responsible for backups, however CSI would welcome the opportunity to review existing backup procedures and technology and make any recommendations to improve RPO and RTO performance.



GROW



SAVE



INNOVATE



PROTECT

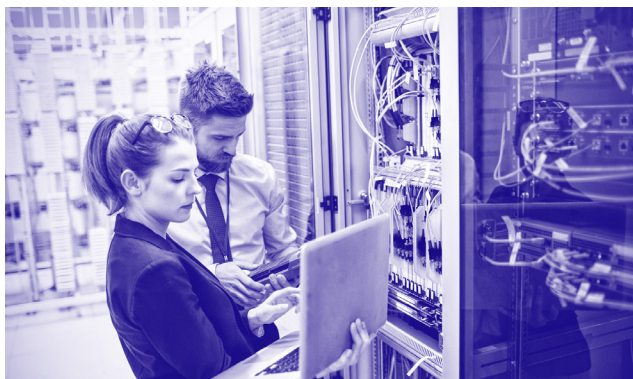
Archive as a Service

As core applications evolve, organisations may migrate IBM i workloads to non-IBM platforms or software as a service (SaaS) alternatives. However, access to data from the legacy IBM i systems may still be required for many years, and long-term archiving of data is often required for financial or medical records.

CSI's Archive as a Service delivers:

- an archive IBM i system in the CSI PowerCloud connected to the user organisation's primary system
- the archive system is cost-effective because a high performance environment isn't typically required for retrieval of archived data
- the archive system is monitored only for "sign of life" and is not backed up

CSI will assist in migrating data to the archive system and users can access the archive system with native data base query tools.



CSI and IBM 30+ years partnership

CSI has been delivering cost-effective HA and DR services to our clients for decades - and using flexible IBM i resources in the CSI PowerCloud avoids any capex investment.

As a long-standing IBM Platinum Business Partner, CSI protects clients across all market sectors from financial services, healthcare and education; manufacturing, retail and logistics; travel and tourism as well as services industries including legal, HR and IT sectors.

Platinum
Business
Partner



CSI UK Head Office

CSI House
2940 Trident Court
Birmingham Business Park
Solihull Parkway
Birmingham B37 7YN

CSI North America

379 West Broadway
New York
NY 10012

T +44 (0)800 1088 301

E INFO@YOURPERPETUALEDGE.COM

W YOURPERPETUALEDGE.COM